



Peiying Primary School

# Welcome to Parents Briefing for P5 and P6 Levels



Building Character, Enriching Lives, Stretching Potential



Peiyong Primary School

# Vision, Mission, Core Values Student Vision Outcomes







# Vision

**LIFELONG LEARNERS,  
LEADERS OF CHARACTER**

*We aspire to meaningfully pique  
our students' interest in their  
learning and encourage them to  
be lifelong learners.*







# Vision

**LIFELONG LEARNERS,  
LEADERS OF CHARACTER**

*We focus on character-building  
and leadership development of  
our students and are guided by  
our school values: PRIDE*







# Mission

- **B**uilding Character
- **E**nriching Lives
- **S**tretching Po**T**ential







# Core Values

- P** Perseverance
- R** Respect
- I** Integrity
- D** Diligence
- E** Empathy





**P** Perseverance

- I will not give up when I face problems.
- I find different ways to solve problems using a growth mindset







# R Respect

- I speak politely and I am kind to others.
- I listen actively and respect the opinions of others.
- I am sensitive to the feelings and thoughts of others.







# I Integrity

- I will tell the truth and do the right thing.
- I know what is right from wrong.
- I will influence others to do the right thing.

P

R

I

D

E





# D Diligence

- I complete my work carefully and hand in work on time.
- I put effort into my work, and I am independent learner.
- I produce my best work consistently.



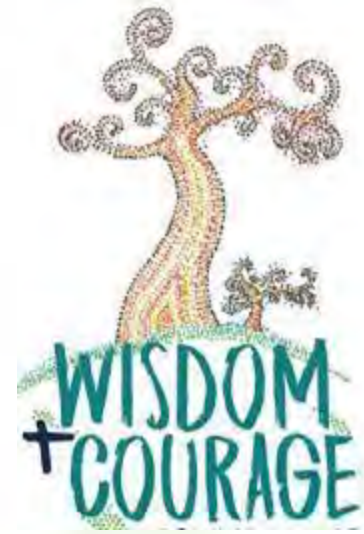




# E Empathy

- I take care of others.
- I help others.
- I care for the environment and take actions to conserve the environment.
- I encourage others to care for the environment.





# School Motto

- **Wisdom & Courage**
  - Wisdom to choose,
  - Courage to do the right thing.







# Student Vision Outcomes



## Engaged Learners

- Show curiosity for learning
- Work with others respectfully
- Take responsibility for their own learning
- Think critically and communicate confidently







# Student Vision Outcomes



## Resilient Learners

- Develop a growth mindset towards learning
- Stay focused and persevere when faced with difficulties
- Reflect on their thoughts and actions and learn from mistakes
- Adapt and explore different solutions to respond to challenges







# Student Vision Outcomes



## Leaders of Character

- Demonstrate strong PRIDE values
- Know right from wrong
- Know their strengths and areas for growth
- Lead confidently







# Student Vision Outcomes

## Caring Citizens



- **Know and love Singapore**
- **Show kindness and graciousness to people around us**
- **Demonstrate sensitivity to customs and cultural practices in Singapore**
- **Demonstrate awareness and participate actively in school and community events**
- **Adopt healthy habits, develop an awareness of the arts and care for the environment**







# Safety and Admin Matters



- **Thermometer**

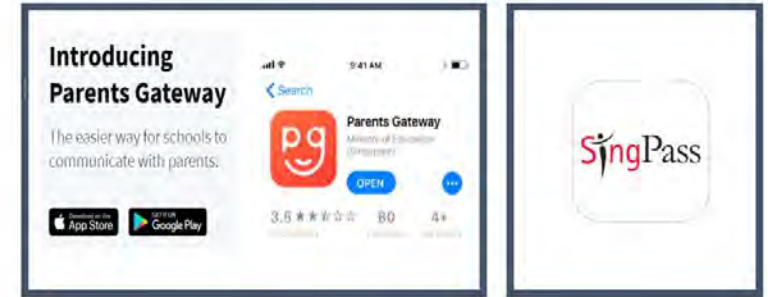
- Ensure that your child's thermometer is in working condition.

- **Personal Health**

- If unwell, please see a doctor and rest for the duration of the Medical Leave.
- Advised to put on a mask if coughing or sneezing.







- **Parent Gateway (PG)**

- strongly encouraged to be on board
- letters to parents, consent forms and announcement will be via PG

- **Road safety**

- students who should cycle on the cycling paths
- to park bicycle in school premises or designated bicycle racks in the neighbouring blocks



# Road Safety of Students

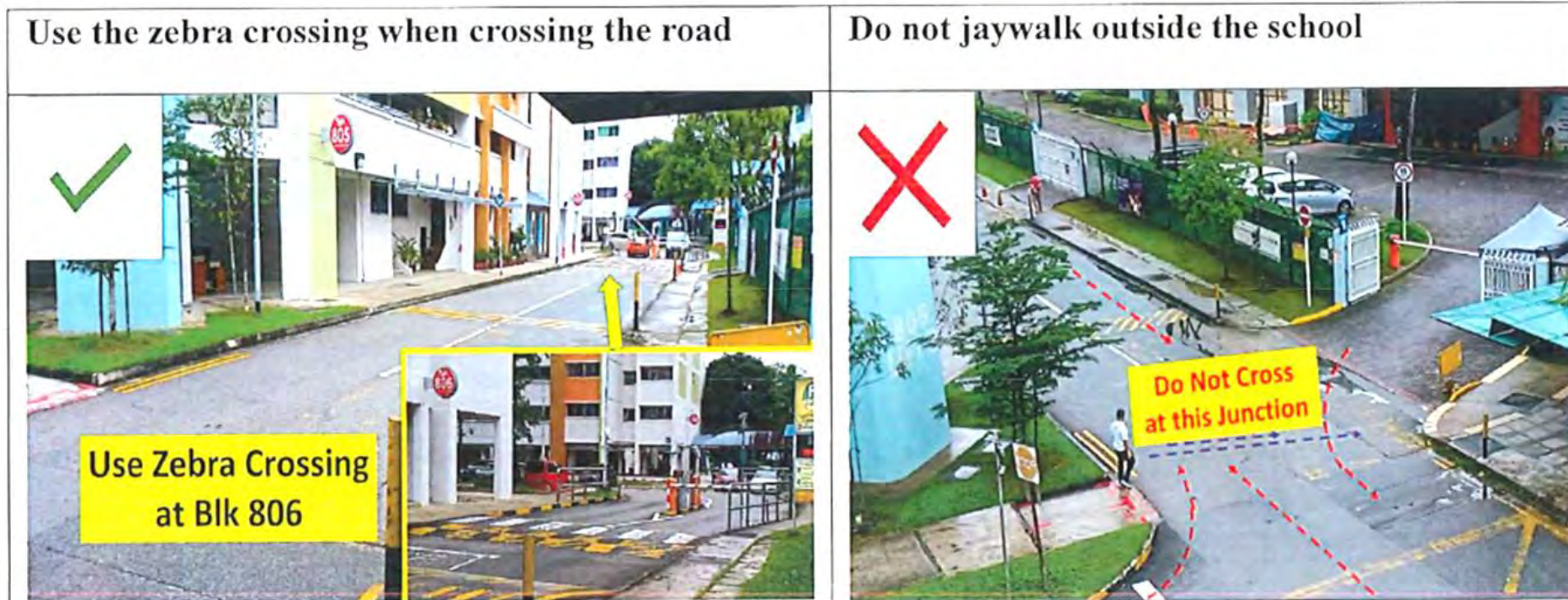
For parents who drive....

- drive carefully, reduce vehicle speed and stay alert for pedestrian crossing in school zone
- cooperate with traffic marshals
- let your child alight only at designated drop-off point





# Road Safety of Students



- Students to use pedestrian crossing at blocks 803 and 806 or to enter the school via gate 3 at block 808.





# The POSB Smart Buddy Programme

- Launched in Aug 2017, the POSB Smart Buddy Programme is the **world's first in-school wearable tech Programme** to enable a contactless payments ecosystem to help cultivate sensible saving and spending habits amongst young students.
- The POSB Smart Buddy Programme has since **received more than 10 international awards and accolades** for innovation, seamless digital payments and excellent customer banking experience.
- It has an **accompanying Smart Buddy mobile app** that allows parents to remotely manage their children's spending, savings and even set saving goals for their children, thereby helping their children cultivate saving habits in a digital and interactive way.
- The POSB Smart Buddy Programme also supports students who **receive school meal subsidies**, providing a **unified payment solution for every student**.
- The current Smart Buddy NETS payment terminals in schools accept the following cards:

## Smart Buddy Card/ Watch <sup>1</sup>



## School Smartcard/ EZ-Link Card <sup>2</sup>



## POSB/ DBS ATM Cards (with NETS Contactless logo)



## NETS Pre-Paid Card (NPC)



## NETS FlashPay



## Home Team NS PASSion POSB Debit Card <sup>3</sup>



## POSB PASSion Card (with NETS Contactless logo)

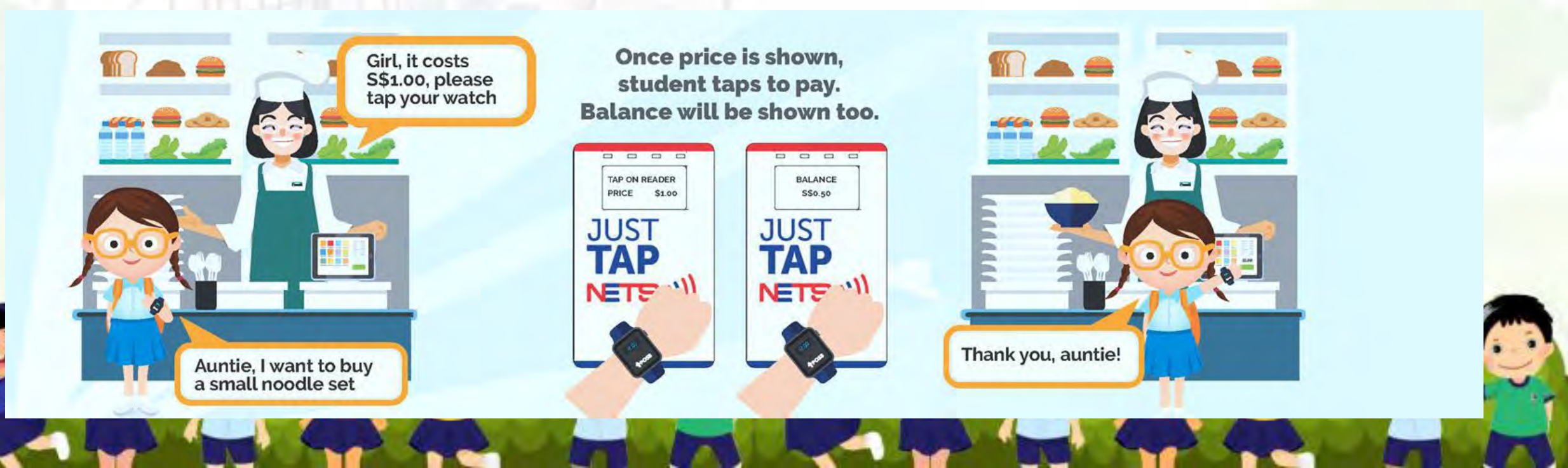


<sup>1</sup> Parent must have DBS/ POSB bank account  
PAS 2.0 cards currently



# The POSB Smart Buddy Programme

- With the growing adoption of e-payment in recent years, it would only be a matter of time for e-payment options to be introduced in schools. In fact, students are already exposed to e-payments on a daily basis (e.g., EZ-Link cards for transport and retail purchases).
- All MOE Schools will be invited to come onboard the programme progressively over the next 3 years.
- E-payment is optional, and cash will continue to be accepted.
- Students under Financial Assistance Scheme(FAS) will continue to receive their meal subsidies as per normal. (No changes)



# What can you do with POSB Smart Buddy?



## For Parents:

Activate and manage your child's Smart Buddy with the mobile app.

### Features

- ✔ Manage daily allowance
- ✔ Monitor expenses/savings
- ✔ Set savings goal
- ✔ Create 'Child Access'
- ✔ Link School Smartcard/ EZ-Link Card



## For Students:

Tap to pay at the school canteen, school bookshop or any retailers which accepts **NETS** payments.

Note: The Smart Buddy card/ watch is not recommended for public transport. All transit usage will be priced at full adult fare.

### Features

- ✔ Tap and Pay
- ✔ Enjoy 10% bonus with Smiley Stamps
- ✔ Set Savings Goal
- ✔ Develop good saving habits



## + Smart Buddy Watch (optional)

### Features

- ✔ Date/Time
- ✔ Nickname
- ✔ Fitness Tracker
- ✔ Heart Rate Tracker
- ✔ Reminders



**\*\*More information will be posted via Parents Gateway. Please do look out for the announcement\*\***

## Benefits to Schools

- ✔ Minimize cash handling
- ✔ Access to transaction data
- ✔ Manage and disburse school meal subsidies







Peiying Primary School

# Home-School Partnership





# Working together for the child

We hope to partner you in your child's development journey.

1. Knowing your child

2. Developing your child

3. Keeping in touch with the school







# Working together for the child

Encourage Joy of Learning by

- not over-emphasising academic performance
- focus on your child's learning journey, rather than compare them to others

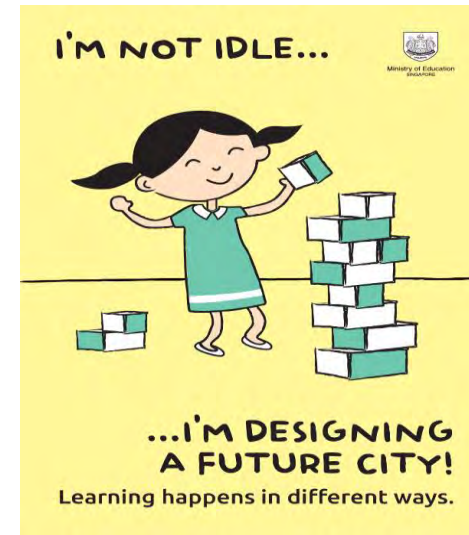
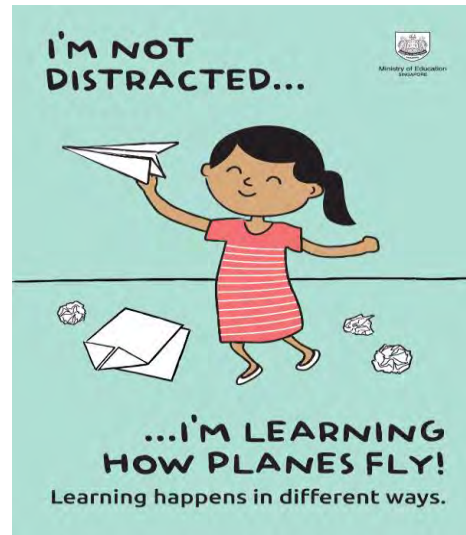




# Working together for the child

With these changes, your child will

- have more time and space to deepen learning
- better enjoy the process of learning
- develop dispositions for lifelong learning







# Working together for the child

Help to enhance your child's mental & physical well-being by;

- Guiding them in time management
- Getting them to follow routines
- Allowing them to learn to solve their problems



# Response Time from Staff



**For E-mail correspondence – 3-7-21 guideline applies**

- **3 Days – Staff will reply within 3 days for straightforward matters**
- **7 Days – Staff will send a holding reply within 3 days for issues that require further investigation or consultation and respond within 7 to 21 days.**





# Staff Well-Being

- Protect teacher's personal time
- Contact teachers during school hours only
- Via email or school phone



Wellbeing



# P5 & P6 Matters

- Level Programmes
  - PSLE Scoring
- Choosing Secondary Schools
  - DSA

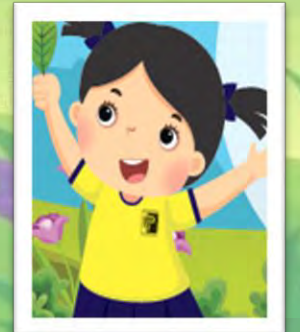
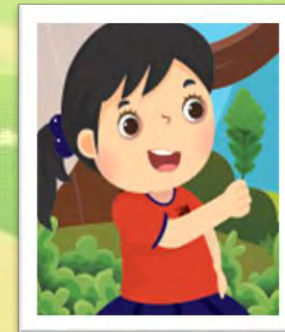
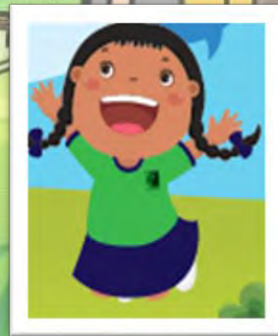






Peiying Primary School

# Level Programmes



Building Character, Enriching Lives, Stretching Potential

# Level Programmes

## Primary 5

- Learning Journeys
  - Indian Heritage Centre
  - DNA Workshop @ Singapore Science Centre
- Swim Safer Programme
- English Fiesta
- MTL Fortnight
- Track and Field Meet
- STEM Workshop
- P5 Camp
- NE Show
- TIE Programme to Brunei

## Primary 6

- Learning Journeys
  - Gardens by the Bay
  - Asian Civilisations Museum
- English Fiesta
- MTL Fortnight
- Track and Field Meet
- Post-PSLE Activities
  - Learn to Bowl
  - Career Seminar Day
  - Code for Fun
  - Arts Appreciation (Chinese Opera)

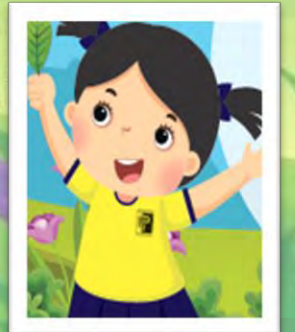
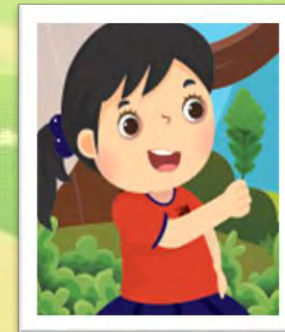
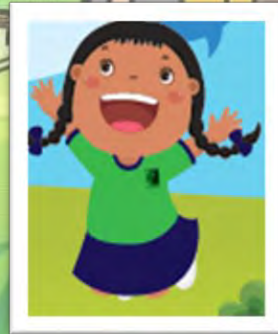






Peiying Primary School

# Assessments



Building Character, Enriching Lives, Stretching Potential

# Assessments

For P5 and P6 students, the Weighted Assessments (WA) and End of Year Exam details are shown below;

Level	Term 1	Term 2	Term 3	Term 4
<b>Primary 5</b>	WA1 (10%)	WA2 (15%)	WA3 (15%)	End of Year (60%)
<b>Primary 6</b>	WA1 (15%)	WA2 (15%)	Prelim (70%)	PSLE





# The PSLE SCORING and S1 POSTING

**SUPPORTING STUDENTS AND PARENTS IN MAKING  
INFORMED SCHOOL CHOICES FOR PSLE**



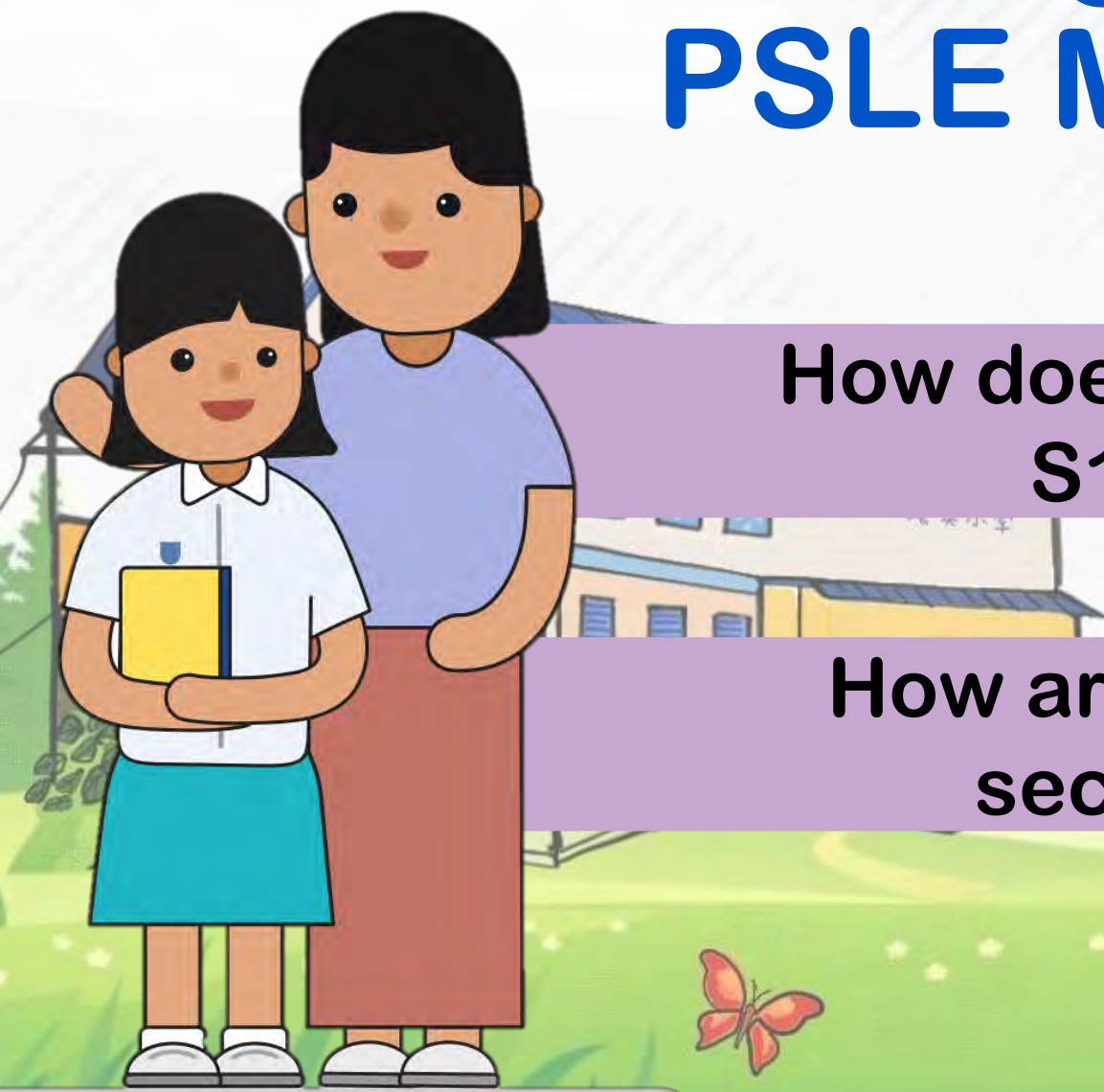
# From today's session...

- A better understanding of the support that your child may need in the transition journey from primary to secondary school
- Understanding Full Subject-Based Banding (Full SBB)
- Information on what to expect in secondary school





# Sharing About PSLE Matters



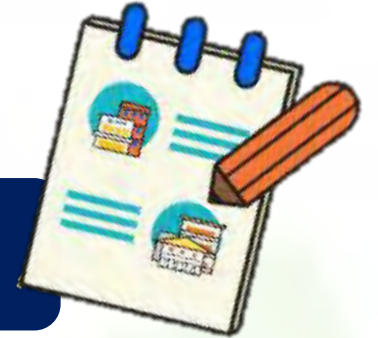
**How does the PSLE Scoring & S1 Posting work?**

**How are students posted to secondary schools?**

# WHAT IS THE INTENT OF THE PSLE?



A useful checkpoint at the end of primary school



A fair way to determine secondary school posting

Over the years, we have been changing the education system to help our students discover and develop their strengths, interests, abilities and talents while moving away from an over-emphasis on academic results. Our PSLE Scoring system reduces the over-emphasis on academic results by:

1

Reducing fine differentiation of students' examination results at a young age.

2

Recognising a student's level of achievement, regardless of how his/her peers have done.

3

Encouraging families to choose secondary schools holistically based on students' strengths, interests and learning needs.





# WHAT ARE ACHIEVEMENT LEVELS (AL)?

## WHY ARE THE BANDS UNEVEN?

- Students with similar scores in each subject are grouped into scoring bands measured in 8 ALs.
- AL bands and mark ranges are set based on the learning objectives of the curriculum, and mirror the way we learn.

When we learn something new, after some initial practice, we often find ourselves improving significantly.

As we get better, the improvements become small steps, and finally, as we reach a high level, we inch just a little further, even after much learning and practice.


The ALs were designed to reflect this reality of learning. They help educators, students, and parents know how ready students are to access the curriculum at the next level.

AL	RAW MARK RANGE
1	$\geq 90$
2	85 – 89
3	80 – 84
4	75 – 79
5	65 – 74
6	45 – 64
7	20 – 44
8	$< 20$



# HOW DOES THE PSLE SCORING SYSTEM WORK?

- The overall PSLE Score is made up of 4 subject Achievement Levels (ALs).
- The PSLE Score can range from 4 to 32, with 4 being the best.



Elena		PSLE Score 14
PSLE Subject	AL Score	
English	2	
Math	2	
Foundation Science	ALA = 6	
Mother Tongue Language	4	



# GRADING OF FOUNDATION SUBJECT GRADES

- Foundation subject grades are graded in scoring bands from **AL A to C**.
- To derive a student's overall PSLE Score for S1 Posting, AL A to AL C for Foundation level subjects are **mapped to AL 6 to AL 8 of Standard level subjects respectively**.
- This mapping is based on the learning and assessment load of the subjects, and informs students of how ready they are for the curriculum in secondary school.

FOUNDATION LEVEL AL	FOUNDATION RAW MARK RANGE	EQUIVALENT STANDARD LEVEL AL
A	75 – 100	6
B	30 – 74	7
C	< 30	8



# ELIGIBILITY CRITERIA FOR HIGHER MOTHER TONGUE LANGUAGE (HMTL)

- The eligibility criteria for taking HMTL ensures that students can cope with the higher academic load.

## ELIGIBILITY CRITERIA FOR HMTL

- (i) An overall PSLE Score of 8 or better**
- or**
- (ii) An overall PSLE Score of 9 to 14 (inclusive); and attain**
  - **AL 1 / AL 2 in MTL or**
  - **Distinction / Merit in HMTL**

- For students who do not meet the above criteria, secondary schools will have the flexibility to offer HMTL to students if they are assessed to have high ability and interest in MTL, and are able to cope with the learning load required.





# HOW DOES THE S1 POSTING WORK?

- Your child has **six choices** in selecting their secondary schools.
- Your child will be posted to a secondary school based on academic merit, i.e., PSLE Score, and their choice order of schools.
- If two or more students with the same PSLE Score vie for the last remaining place(s) in a school, the following tie-breakers are used in the following order:

1. CITIZENSHIP
2. CHOICE ORDER OF SCHOOLS
3. COMPUTERISED BALLOTING

**CHOICE ORDER  
MATTERS**



- The tie-breaker based on school choice order recognises the different considerations that families have in making school choices.



# Tie-breakers

## in the new S1 Posting System

Tie-breakers are used only if there are two or more students with the same PSLE Score vying for the last available place(s) in a school.

Here's a simplified example.

5 students are vying for the last places in the schools of their choice.

Students with better scores will be posted first

Tie-breaker #1: Citizenship

Tie-breaker #2: Choice order of schools

Tie-breaker #3: Computerised balloting

**Jane**  
Singapore Citizen  
16 pts

SCHOOL CHOICES:  
1) Sch A  
2) Sch ...  
3) Sch ...  
4) Sch ...

Jane has a better PSLE score. She will be posted first, to **School A**.

**Bryan**  
Singapore Citizen  
20 pts

SCHOOL CHOICES:  
1) Sch B  
2) Sch ...  
3) Sch ...  
4) Sch ...

Bryan and Mary are Singapore Citizens. They will have priority to enter **School B**.

Because Bryan ranked School B higher than Mary, he will be posted to **School B**.

**Mary**  
Singapore Citizen  
20 pts

SCHOOL CHOICES:  
1) Sch A  
2) Sch B  
3) Sch C  
4) Sch ...

Bryan, Mary, Alan and Rina have the same score.

As Jane has taken the last available place in School A, Bryan, Mary, Alan and Rina will vie for the last available place in their next choice, **School B**.

Since Bryan has taken the last place in School B, Mary will be posted to **School C**.

**Alan**  
Permanent Resident  
20 pts

SCHOOL CHOICES:  
1) Sch A  
2) Sch B  
3) Sch D  
4) Sch ...

Alan and Rina will be tie-broken out as they are Permanent Residents. They will be considered for their next choice, **School D**.

Alan and Rina have both ranked School D as their third choice. They will go through computerised balloting to vie for the last remaining place in **School D**.

Through computerised balloting, Alan is posted to **School D**.

**Rina**  
Permanent Resident  
20 pts

SCHOOL CHOICES:  
1) Sch A  
2) Sch B  
3) Sch D  
4) Sch E







Since Alan has taken the last place in School D, Rina will be posted to her fourth choice, **School E**.



# HCL POSTING ADVANTAGE TO SAP SCHOOLS

Students who obtained a Distinction/Merit/Pass for HCL at the PSLE and an overall PSLE Score of 14 or better will receive a posting advantage when applying to SAP schools.

Students will be considered for admission to SAP schools in the following order:

1st		7	NO HCL
2nd		8	DISTINCTION
3rd		8	MERIT
4th		8	PASS
5th		8	NO HCL
6th		9	DISTINCTION

Students with better PSLE Scores will be posted first, even if they did not take HCL

Amongst students with the same PSLE Score, those with better HCL grades will be posted first

- Students' HCL results are denoted as 'D' (Distinction), 'M' (Merit) or 'P' (Pass).
- Students who obtain (i) a Distinction / Merit / Pass in HCL and (ii) a PSLE Score of 14 or better are eligible for posting advantage to SAP schools.
- Students are ranked taking into account their performance in HCL.
- This posting advantage applies before the tie-breakers for S1 Posting.

# Understanding Full Subject-Based Banding (Full SBB)



What is Full SBB?



# WHAT IS FULL SBB?

- Full SBB will be implemented in secondary schools from 2024, and aims for students to:



Have greater ownership of their learning according to their strengths, interests, abilities, talents and learning needs.



Develop a growth mindset and an intrinsic motivation to learn for life.



Have more opportunities to interact with friends of different strengths, interests, abilities and talents.



Have more options for post-sec pathways, while ensuring they have strong fundamentals and can thrive in their chosen pathway.



# FULL SUBJECT-BASED BANDING (FULL SBB)



**2020**

- Full SBB pilot commenced in 28 secondary schools.
- The initial feedback from pilot schools has been positive.



**2022-2023**

- Around 90 schools have implemented aspects of Full SBB by 2023.



**2024**

- Remaining schools that admit students from 3 streams will be implementing Full SBB.
- Express, N(A) and N(T) streams will be removed for the 2024 S1 cohort onwards.
- Students will be grouped in mixed form classes in lower secondary.



**2027**

- From 2027, students will sit for the Singapore-Cambridge Secondary Education Certificate (SEC) examinations, instead of the GCE N- and O- Level examinations.
- Students will receive an SEC which reflects the subjects and subject levels that they offered.



# FULL SUBJECT-BASED BANDING (FULL SBB)

## Secondary school experience under Full SBB

- **Mixed form classes** and **common curriculum subjects** at **Lower Secondary**.
- **Subjects to be offered at G1, G2 or G3**, mapped from the standards of the N(T), N(A) and Express subject levels respectively.
- **Greater flexibility** to customise students' learning by offering subjects at various subject levels.
- **Shift away from stream-based subject offerings.**

After PSLE

Start of Sec

End of Sec

Post Sec

**From 2023:**  
Entry to S1  
through 1 of 3  
Posting Groups

**From 2027:**  
Singapore-Cambridge  
Secondary Education  
Certificate (SEC)  
examination

**Updated post-  
secondary admission  
criteria**

# FULL SBB: S1 POSTING

**Three Posting Groups to ensure schools are accessible to diverse learners**

From the 2024 S1 cohort, MOE will facilitate the admission of P6 students into S1 through 3 Posting Groups: **Posting Group 1, 2 and 3.**

Objective: Ensures that schools continue to admit a **diverse profile of students** and students have **access to a wide range of schools.**

**Unlike the academic streams of Express, N(A) and N(T), Posting Groups will only be used for the purposes of facilitating entry into secondary school and to guide the subject levels students offer at the start of S1.**

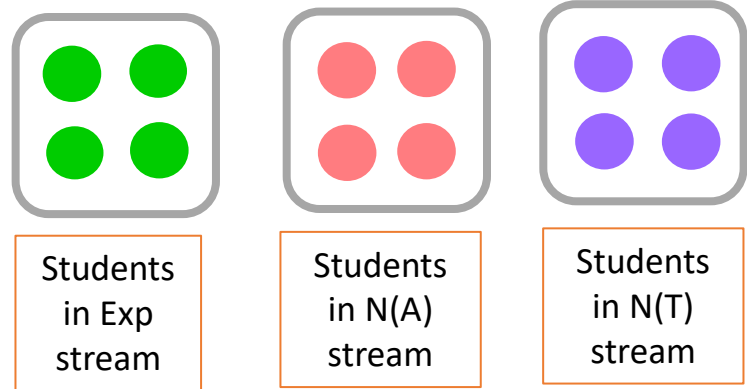
- Posting Groups assigned based on PSLE Scores, mapped from existing PSLE Score ranges for Express, N(A) and N(T) streams.
- PSLE Scores provide a good gauge of the subject levels that students can offer at the beginning of S1.

PSLE Score	Posting Group	Subject level for most subjects
4 – 20	3	G3
21 and 22	2 or 3	G2 or G3
23 and 24	2	G2
25	1 or 2	G1 or G2
26 – 30 <i>(with AL 7 in EL and MA)</i>	1	G1



# FULL SBB: MIXED FORM CLASSES IN LOWER SECONDARY

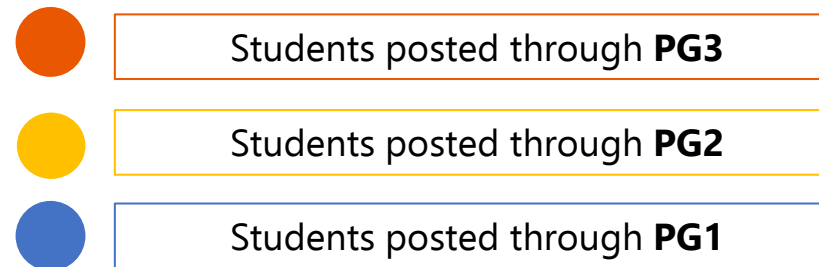
Form classes arranged by academic stream in schools yet to implement Full SBB



With Full SBB:  
Mixed form classes



- Under Full SBB, students will be placed in mixed form classes in Lower Secondary to ensure a **mix of learner profiles**.
  - Provides students with **more opportunities** to interact with other students of different strengths and interests.
  - Enables students to **build meaningful friendships and learn to value different perspectives**.



# FULL SBB: COMMON CURRICULUM

## Common Curriculum Subjects taken in mixed form classes (~1/3 curriculum time)

### Examinable Subjects:

- Art
- Design & Technology (D&T)
- Food & Consumer Education (FCE)

### Non-examinable Subjects:

- Character & Citizenship Education (CCE)
- Music
- Physical Education (PE)

- The six common curriculum subjects would each have a single syllabus for all students at Lower Secondary levels.
  - These subjects will be taught and assessed at a common level that is accessible to all students.
  - Teachers will adopt a range of approaches to cater to the different learning needs of their students.
- For other subjects, students attend classes with others taking the subject at the same subject level.





# OFFERING SUBJECTS AT A MORE DEMANDING LEVEL AT THE START OF SEC 1

- Students posted to schools through PG1 and PG2 can offer **English Language, Mother Tongue Languages, Mathematics and Science** at a more demanding level based on their PSLE AL for each subject.

FOR STUDENTS POSTED TO SCHOOLS THROUGH PG1 AND PG2			
SUBJECT	PSLE SUBJECT LEVEL	PSLE AL FOR SPECIFIC SUBJECT	OPTION TO TAKE THE S1 SUBJECT AT :
<ul style="list-style-type: none"> <li>• English Language</li> <li>• Mother Tongue Language</li> <li>• Mathematics</li> <li>• Science</li> </ul>	Standard	AL 5 or better	G3 or G2
		AL 6	G2
	Foundation	AL A	G2



# OFFERING SUBJECTS AT A LESS DEMANDING LEVEL AT THE START OF S1

- For students who offered **English Language, Mathematics and/or Science** at Foundation level at PSLE, but are otherwise eligible to take most of their subjects at G3 when entering secondary school, they may choose to take these subjects at a less demanding level (LDL; i.e., G2), in consultation with their secondary schools.
- Students have the option to offer **Mother Tongue Languages (MTL)** at LDL based on their PSLE Achievement Level (AL) for the subject:

POSTING GROUP (PG)	PSLE AL FOR MTL <sup>^</sup>	OPTION TO OFFER MTL AT A LESS DEMANDING LEVEL
PG3	AL 6	G2
	AL 7-8	G1 or G2
PG2	AL 7-8	G1

<sup>^</sup> Foundation level AL A to AL C will be mapped to AL 6 to AL 8 of Standard level subjects respectively.

- Students who are eligible to offer MTL at LDL can still choose to offer MTL at-level if they prefer.





# SUBJECT LEVEL FLEXIBILITY BEYOND THE START OF S1

- Beyond the start of Sec 1, students may **adjust their subject levels across their secondary school journey**.
  - Students may offer subjects, including English Language, Mother Tongue Languages, Mathematics, Science and Humanities subjects at a **more demanding level** if they meet the criteria and based on the school's holistic considerations.
  - Students who are not coping well may **offer subjects at a less demanding level**, based on their school-based performance and school's holistic considerations, to calibrate their curricular load.
  - In upper secondary, students may offer elective subjects (for example, Additional Mathematics, Art, Design & Technology) at a subject level suited to their strengths, interests and post-secondary aspirations, to **allow them to pursue their interests without adding unduly to their overall curriculum load**.
- Schools will consider **students' learning progress and developmental needs** when helping them determine their subject choices.

# Choosing Suitable Secondary Schools

**Factors to Consider**

**Preparing for S1 Posting Exercise**





# PSLE SCORE RANGES FOR INDIVIDUAL SECONDARY SCHOOLS



# PSLE SCORE RANGES FOR ALL SECONDARY SCHOOLS

- Use the PSLE Score ranges as a reference alongside other important factors, such as the school's distinctive programmes, Co-Curricular Activities (CCA), culture, ethos, and proximity to home when shortlisting school choices that would best fit a student's educational needs.
- The 2023 PSLE Score ranges for individual secondary schools will be available for your reference on <https://moe.gov.sg/schoolfinder> and <https://go.gov.sg/exploreschools>. They reflect the PSLE scores of the student posted into these schools at the 2023 S1 Posting Exercise.
- A school's PSLE Score range (including Cut-Off-Point) for a particular year is **not pre-determined** before the posting, and may vary from year to year, depending on the cohort's PSLE results and their school choices in that year's S1 Posting Exercise.

## SchoolFinder Tool



<https://www.moe.gov.sg/schoolfinder>

## MySkillsFuture Student Portal (Primary)



<https://go.gov.sg/exploreschools>



# PSLE SCORE RANGES FOR INDIVIDUAL SECONDARY SCHOOLS

The PSLE Score range refers to the PSLE Score of **the first and last student admitted** to a particular school **in the previous year** via the S1 Posting Exercise. This shows the range of student profiles who enter each school.

## Example

XX Secondary School  
PSLE Score range of 2022

Posting Group 3	15	20
Posting Group 2	21	24
Posting Group 1	25	28

PSLE Score of the first student posted into the school in the respective courses

PSLE Score of the last student posted into the school in the respective courses [i.e., the school's **Cut-Off Point (COP)**]



# EXAMPLE OF AN SAP SCHOOL'S PSLE SCORE RANGE

While students need not take HCL to enter SAP schools, students who pass HCL receive a posting advantage for admission. To reflect this, the PSLE Score ranges of SAP schools include the HCL grades of the first and last student admitted in the previous year via S1 Posting.

## Example

XX Secondary School  
PSLE Score range of 2021

Express	5 (D) – 12 (P)
Normal (Academic)	
Normal (Technical)	

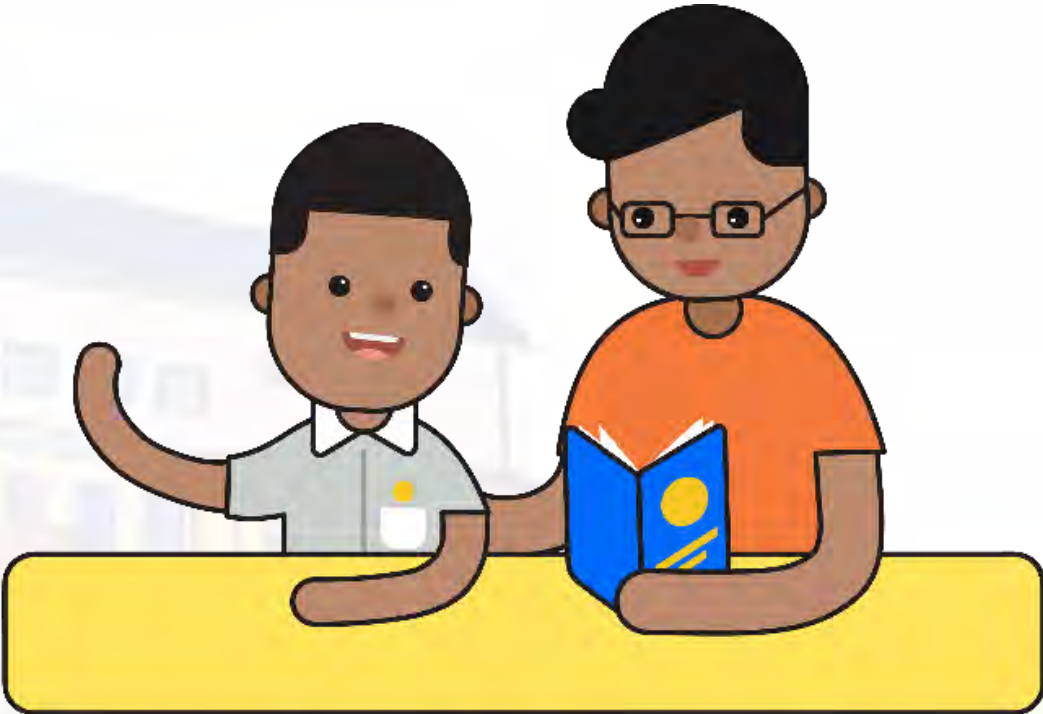
PSLE Score and HCL grade of the first student posted into the school in the Express course

PSLE Score and HCL grade of the last student posted into the school in the Express course [i.e. the school's Cut-Off Point (COP)]





# CHOOSING SUITABLE SECONDARY SCHOOLS WITH YOUR CHILD



# SCHOOL CHOICE JOURNEY

- The PSLE Score ranges are a **useful reference point** for parents and students to consider secondary schools.
- Use this information, together with other **important factors** such as the secondary schools' distinctive programmes, CCAs, ethos and cultures, to shortlist schools that would best fit the educational needs of the student.
- If your child has specific talents and strengths beyond the PSLE (e.g. areas such as sports, performing arts and leadership), consider the **Direct School Admission-Secondary (DSA-Sec)** as an alternative admission pathway to access secondary schools that have talent development programmes in these areas.





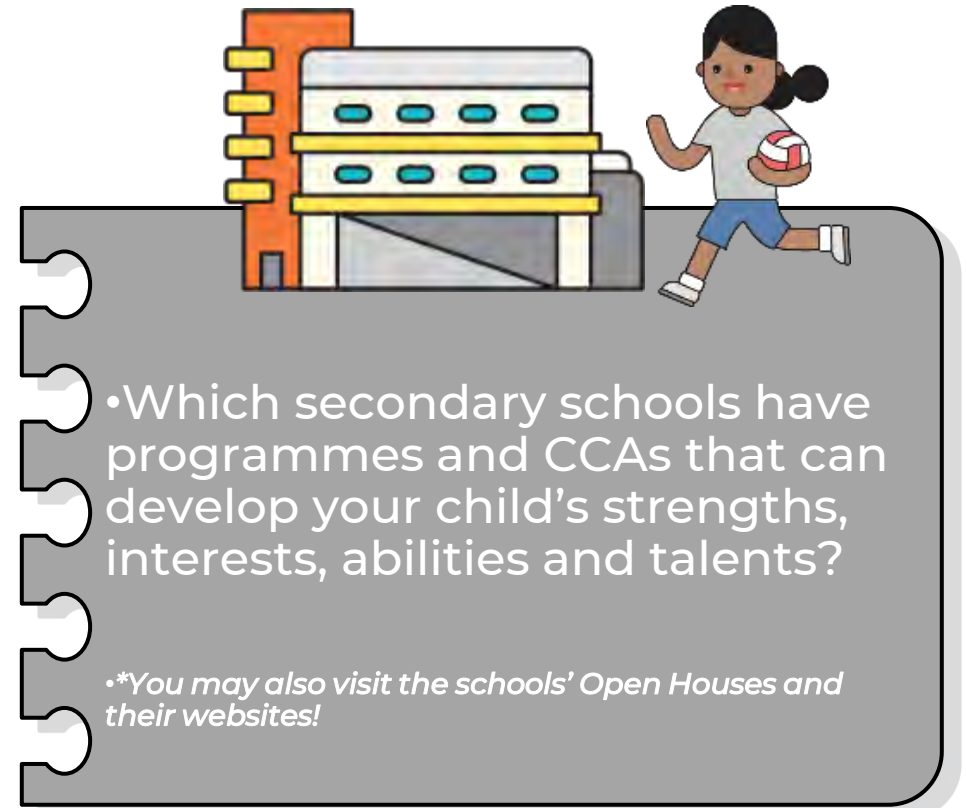
# WHICH SCHOOLS SHOULD MY CHILD SHORTLIST?



•What are your child's interests?

•What does your child enjoy doing?

Want to know more about yourself?  
Embark on a journey in **Career Quest** on  
the [MySkillsFuture Student Portal](#)  
[\(Primary\)](#) now!



•Which secondary schools have programmes and CCAs that can develop your child's strengths, interests, abilities and talents?

*•You may also visit the schools' Open Houses and their websites!*

Want to learn more about different schools? Explore the **Education Guide** on  
the [MySkillsFuture Student Portal](#)  
[\(Primary\)](#) now!

# IMPORTANT FACTORS TO CONSIDER WHEN CHOOSING SECONDARY SCHOOLS

## 01 SCHOOL CULTURE



What is the school's culture and ethos?

## 02 LEARNING ENVIRONMENT



How do I feel about the school based on what I saw at the Open House?

## 03 PROGRAMMES



Does the school have programmes I would enjoy?

## 04 CCAs



Are there CCAs that interest me and can nurture my strengths, abilities and talents?

## 05 SUBJECTS

What subjects are offered in the school?



## 06 LOCATION

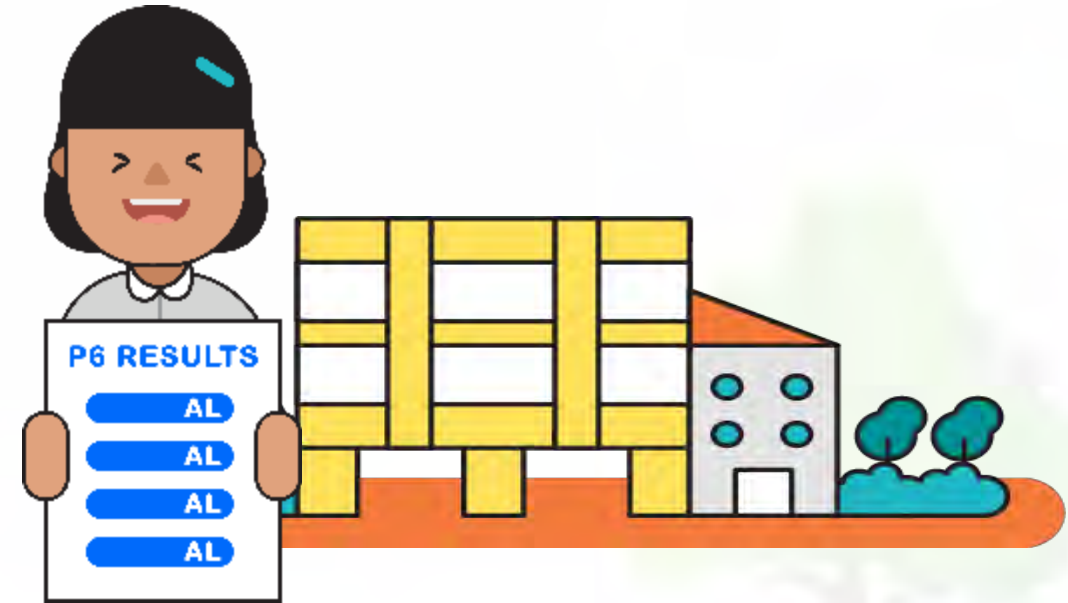


How long will it take for me to travel to school and back home?



# PREPARING FOR THE S1 POSTING EXERCISE

Choosing  
Secondary  
Schools

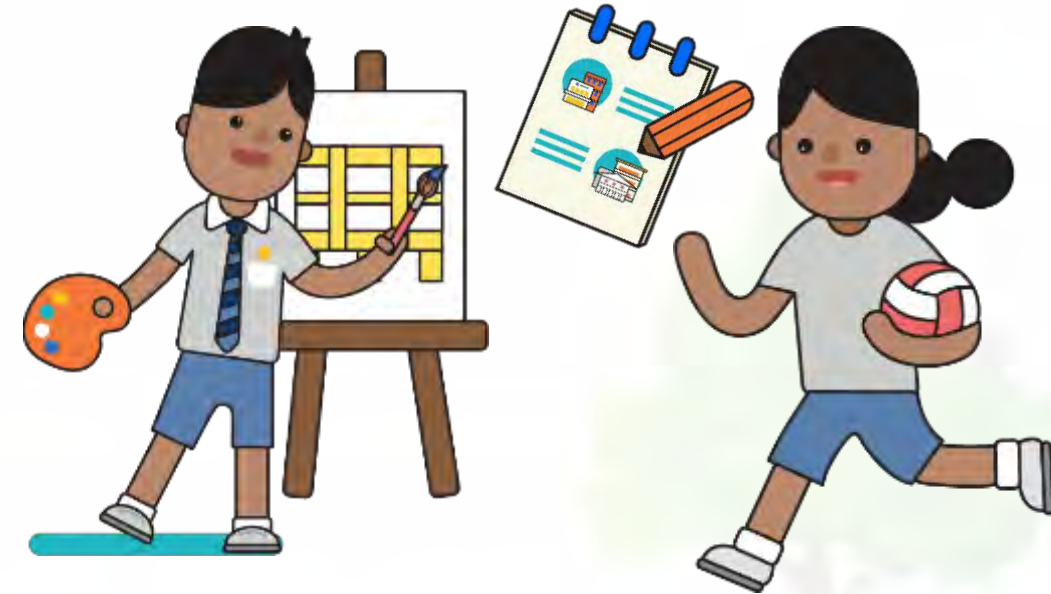
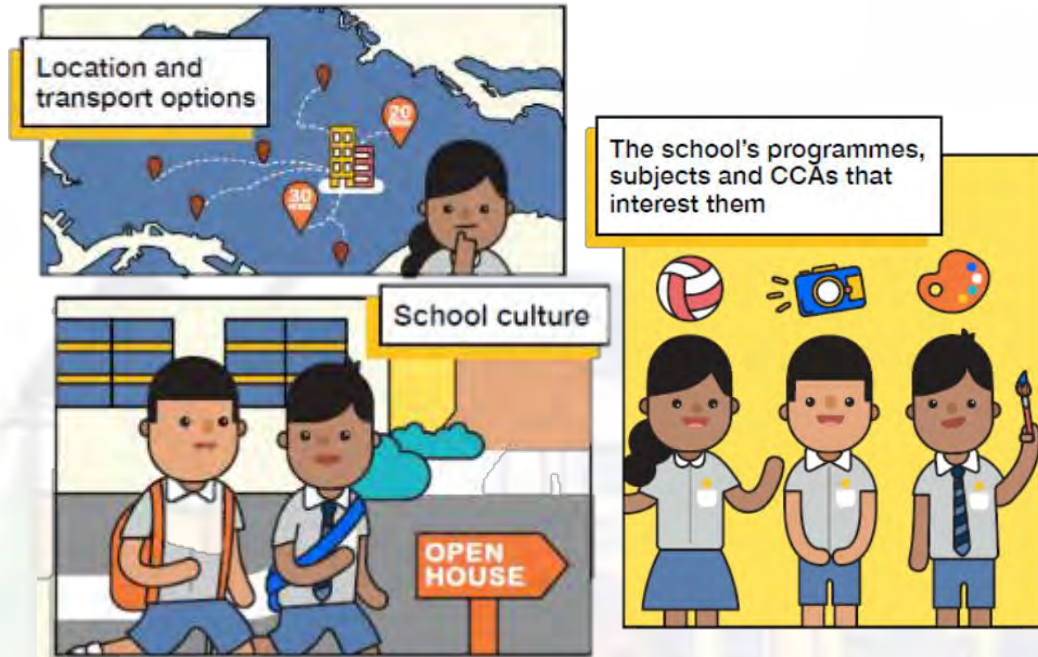


Use all 6 options with a range of Cut-off Points as this will increase your child's chances of being posted to a school of their choice.

Take reference from schools' PSLE Score ranges, which serve as a guide for you and your child to shortlist school choices. Consider at least 2-3 schools where your child's PSLE Score is better than the school's Cut-off Point.

# PREPARING FOR THE S1 POSTING EXERCISE

Choosing  
Secondary  
Schools



Shortlist schools that offer programmes that cater to your child's strengths, interests, abilities, talents and learning needs, as well as provide suitable learning environments.

Rank your child's preferred school higher in the choice order of schools. This will increase your child's chances of being posted to that school, if they need to undergo tie-breaking.



# TIPS FOR PARENTS!

**Be open and flexible** when discussing your child's preferences, needs and choices.

**Manage your own expectations** and do not project these expectations onto your child.

Have regular conversations with your child to **understand more about his/her strengths, interests, abilities, talents and aspirations.**

**Affirm your child** and offer support when he/she shares his/her plans with you.



# FIND OUT MORE ON THE PSLE-FSBB MICROSITE!



<https://go.gov.sg/pslefsbb>





# OTHER RESOURCES

## 1 SchoolFinder Tool

**SCHOOL  
FINDER**



<https://go.gov.sg/secschoolfinder>

## 2 “Welcome to Secondary School” video



<https://go.gov.sg/welcome-to-secondary-school>

## 3 Secondary School Education Booklet



<https://go.gov.sg/psle-sec-sch-brochure>

## 4 ECG Parent Guide



<https://go.gov.sg/parent-guide>



# Direct School Admission (DSA) - Sec Exercise

- Direct Admission to Schools at Sec One
  - Govt / Govt-Aided Schools
  - Independent Schools
  - Special Assistance Plan (SAP) Schools
  - Specialised Schools
  - Integrated Programme (IP) Schools





# Is the DSA-Sec right for my child?

If your child has specific **talents** which a school offers the DSA-Sec in

And is **passionate** about and **committed** to developing his/her strengths and interests

DSA-Sec can support his/her development in that talent area.

**Talent**  
**Passion**  
**Commitment**



# DSA-Sec Timeline

\*(tentative) start of May to Mid-June  
(4 weeks)

**Apply** for DSA-Sec through DSA-Sec Application Portal.

Late-October

**Rank** your offers, if you receive offers from multiple schools

PSLE

**Shortlisting and Selection by secondary schools.**

Each secondary school has different selection criteria for its categories and programmes. Schools will inform you of the selection outcome **by Aug.**

**You will know** whether you have been allocated to a school through the DSA-Sec, at the same time you receive your PSLE results.

Late-November





# Where can I find more information on the 2024 DSA-Sec?

- Check the **MOE DSA-Sec website** for important dates and timelines, and for information on how DSA-Sec will be conducted.
- The **SchoolFinder** also contains information on DSA categories and secondary schools offering them.

**SCHOOL  
FINDER**

## SchoolFinder

Explore schools based on their distance from your home, locations, CCAs, subjects and programmes offered.

Secondary

×

SEARCH



THANK  
YOU!

